



PHOMITM
econo clay



PHOMI[®]
econic clay

PHOMI econic clay CHARACTERISTICS



Flexible



Eco-Friendly
(Singapore Green Label)



Durable



Easy
Installation



Fire
Retardant



Light & Thin



GREEN CERTIFICATE



100% NATURAL



NOT HARMFUL

Brilliant Surfaces, Elevated Life

PHOMI ECONIC CLAY

▮ **TRAVERTINE SERIES**

▮ **SLATE STONE**

▮ **ROCK FACE**

▮ **ROUGH SURFACE**

▮ **CHISELED STONE**

▮ **INFINITI STONE**

▮ **35 PIECE STACK STONE**

▮ **STONE RIDGE**

▮ **RAMMED EARTH**

▮ **ROPE WAVE**

▮ **BRICK SERIES**

▮ **WOOD SERIES**

▮ **MUSHROOM STONE**

ECONIC CLAY



TRAVERTINE SERIES

PHOMI®
econic clay

600 x 1200mm



TRAVERTINE PRO CLOUD YELLOW



TRAVERTINE PRO CLOUD GREY



CORAL TRAVERTINE PERSIAN GOLD

1200 x 2400mm



TRAVERTINE ANDES YELLOW



TRAVERTINE ANDES GREY



ROME TRAVERTINE CLOUD WHITE



1200 x 2800mm

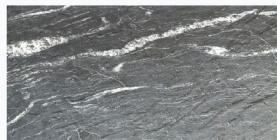


OCEANIC TRAVERTINE LIGHT CLOUD GREY

- *Bookmatch pictures for illustration purpose only, actual veins joining effect may vary with $\pm 3\text{mm}$ tolerance.
- *Picture and colour of phomi econic clay may vary slightly from the actual material.

SLATE STONE

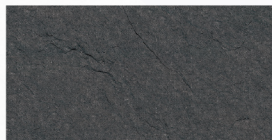
600 x 1200mm



MOUNT CELESTIAL JADE RIVER BLACK



MOUNT CELESTIAL VEIL WHITE



MOUNT CELESTIAL H06 CR



MOUNT CELESTIAL ANDES GOLD

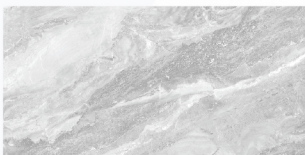


MOUNT CELESTIAL CASTOL BLUE



MOUNT CELESTIAL CASTOL YELLOW

1200 x 2400mm



MARBLE VEIL GREY



MOUNT CELESTIAL VEIL DARK GREY



MOUNT CELESTIAL KAMU RED

ROCK FACE

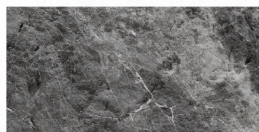
600 x 1200mm



ROCK FACE H001



ROCK FACE STONE GOLD SESAME



ROCK FACE STONE BRUCE DARK GREY

ROUGH SURFACE

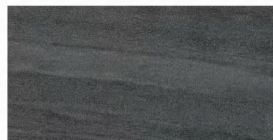
600 x 1200mm



ROUGH SURFACE NILE MEDIUM YELLOW



ROUGH SURFACE NILE DARK GREY



ROUGH SURFACE NILE BLACK

1200 x 2400mm



ROUGH SURFACE JADE RIVER BLACK



ROUGH SURFACE CASTOL WHITE



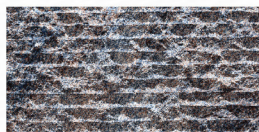
The texture and color of phomi econic clay may vary slightly from the actual material.

CHISELED STONE

600 x 1200mm



CHISELED STONE ANDES WHITE



CHISELED STONE MULTI COLOR BLUE

INFINITI STONE

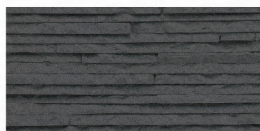
600 x 1200mm



INFINITI GREYISH BROWN



INFINITI GOLD SESAME



INFINITI H06



35 PIECE STACK STONE

600 x 1200mm



35 PIECE STONE GLACIER BLACK



35 PIECE STONE NILE DARK GREY



35 PIECE STONE MULTI COLOR RUST

RAMMED EARTH

600 x 1200mm



RAMMED EARTH WALL LIGHT GREY



RAMMED EARTH WALL RED



RAMMED EARTH WALL EGYPTIAN YELLOW



ROPE WAVE

600 x 1350mm



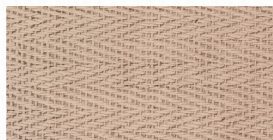
ROPE WAVE A HY001

WEAVING SURFACE

600 x 1350mm

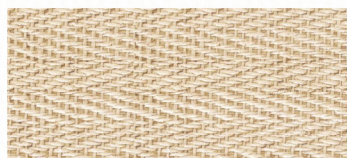


WEAVING HY001



WEAVING RN03

1200 x 2700mm



WEAVING 001 BEIGE



3D PAPEL SURFACE

1200 x 2400mm



3D PAPEL ANDES WHITE



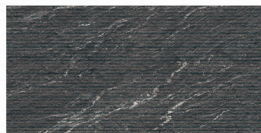
WEAVING FOR EDGE

STONE RIDGED

600 x 1200mm



STONE RIDGED ANDES WHITE



STONE RIDGED JADE RIVER BLACK

1200 x 2800mm



ARCUATE ROCK ANDES YELLOW



*Picture and colour of phomi eeonic clay may vary slightly from the actual material.

BRICK SERIES

60 x 225mm



K BRICKS 052 WHITE

60 x 240mm

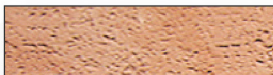


A BRICKS 085089 RED

63 x 222mm

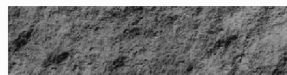


R BRICKS 031043 DARK GREY



R BRICKS 085089 RED

120 x 480mm



E SERIES IDYLIC DARK GREY

WOOD SERIES

300 x 1350mm



ORIGINAL WOOD MAGIC YELLOW



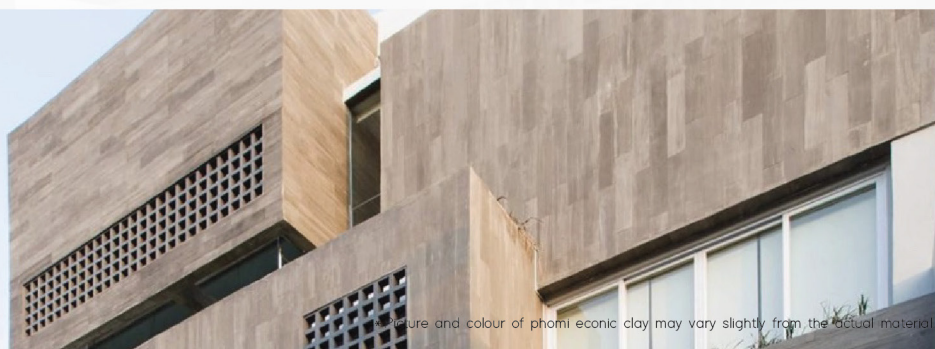
ORIGINAL WOOD YOLY



ORIGINAL WOOD LAYERED ROCK



ORIGINAL WOOD DARK BROWN



The texture and colour of phomi econic clay may vary slightly from the actual material

MUSHROOM STONE

400 x 800mm


 CROSSARD MUSHROOM STONE
 ANDES YELLOW


MUSHROOM STONE 043

800 x 800mm

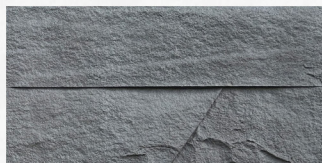


CROSSARD MUSHROOM STONE 052CR

600 x 1200mm



OBIQUE MUSHROOM STONE 043 CR



OBIQUE MUSHROOM 043 CR BLACK



OBIQUE MUSHROOM ANDES YELLOW



*Picture and colour of phomi econic clay may vary slightly from the actual material.

The logo for PHOMI, featuring the word "PHOMI" in a bold, sans-serif font with a registered trademark symbol (®) to its upper right. The background of the entire page is a light-colored wall with a vertical, wavy, textured pattern. On the right side, there is a dark, thin, leafless branch extending upwards and a dark, cylindrical object at the bottom right corner.

PHOMI®

www.phomi.com.my

Jubin BMS Johor Bahru (HQ)

6, Jalan Kencana Emas 2/1,
Kawasan Perindustrian Tebrau 3,
81100 Johor Bahru,
Johor.

Jubin BMS Kota Damansara

13, Jalan TSB 8,
Taman Industri Sungai Buloh,
Kota Damansara,
47000 Petaling Jaya,
Selangor

Jubin BMS Klang (HQ)

No.105, Jalan Batu Tiga Lama,
Off Persiaran Sultan Ibrahim,
41300 Klang,
Selangor.